

**Air Energy**   
COMPRESSED AIR SYSTEMS • INDUSTRIAL PIPEWORK

# ***SUPER SPEEDFIT***

22mm

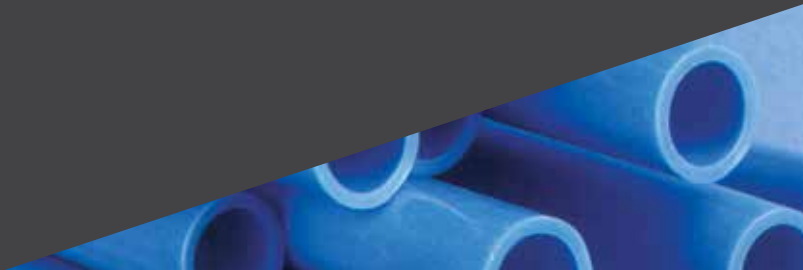
18mm

15mm



**The Push-Fit Solution  
For Compressed Air  
Systems Industrial Pipe**

1300 99 55 26 [airenergy.com.au](http://airenergy.com.au)



The John Guest Push-in System provides the ideal way of installing an air ring main from compressor to air line services components. Using the **SPEEDFIT** System, an air ring main can be installed quickly and easily.

Nylon pipe is cut to length and pushed into the fitting to make a permanent air tight connection. The system is immediately ready for use. No need to prepare threaded pipe or apply solvent. Complex systems are easy to assemble and because the fittings are easy to disconnect, systems are easy to alter or extend.

## Rigid Nylon Pipe

John Guest's new rigid unplasticised nylon 12 pipe is offered in BLUE in 3 metre lengths, or 5 metre lengths for 22mm thickness. It can easily be cut to length using the **SPEEDFIT** Pipe Cutters, and is capable of withstanding temperatures and pressures well in excess of normal working conditions.



## Blue Rigid (unplasticised) Nylon 12 Pipe

### PIPE SPECIFICATIONS

Part No.	Size OD	Size ID	Max working Pressure @20°C	Wall thickness tolerance (mm)	DIN 73378	Pack Qty
PA-RM1512-3M-20B	15	12	25 bar	1.43/1.57	✓	20
PA-RM1814-3M-20B	18	14	25 bar	1.93/2.07	✓	20
PA-RM2218-3M-20B	22	18	25 bar	1.93/2.07	0.6	20

## Pressure/Temperature rating - Nylon

The maximum working pressure for John Guest Rigid Nylon Pipe is shown above. As the temperature increases so the working pressure should fall. See the chart below. Burst Pressure approximately 3 times working pressure.

### WORKING PRESSURE/TEMPERATURE

Pipe Size (mm)		Maximum Working Pressure (BAR)						
OD	ID	20°C	30°C	40°C	50°C	60°C	70°C	80°C - 100°C
15	12	25	20	15	13	11	10	8
18	14	28	22	17	14	14	11	9
22	18	22	18	13	11	10	9	7

Maximum Working Temperature (Air) is 100°C.

### Tube Tolerances

Minimum Working Temperature (Air) is -30°C.

15mm to 22mm +0.05/-0.10mm

Maximum pressure rating for a system depends on the lowest rated component at working temperature. John Guest fittings are typically rated at maximum 10 bar pressure which is below that of nylon pipe.

## Chemical Resistance

For use of with chemicals or potentially aggressive liquids, please refer to our Technical Service Department.

**NOTE:** When using cleaning agents or other potentially aggressive liquids, please ensure compatibility with tubing and fittings.

## Installations - Our Recommendations

Pipe should be supported a minimum 800mm to prevent excessive load being applied to the fitting. These supports should not be closer than 25mm from the end of the fitting.

The full range of fittings, all produced in tough engineering polymers, are offered in 4mm to 28mm sizes, in numerous different patterns. They are suitable for a wide variety of applications, but being manufactured in food grade materials, could be used in potable drinking water and drinks dispense, food and medical locations.

Part No.	Pipe OD	Thread BSP	Pipe #2 OD
----------	---------	------------	------------

## RIGID NYLON PIPE

SPL15L	15 x 3m		
SPL18L	18 x 3m		
SPL22L	22 x 5m		



## STRAIGHT ADAPTOR

PM011214E	12	1/2"	
PM011514E	15	1/2"	
PM011814E	18	1/2"	
PM012216E	22	3/4"	



## STRAIGHT CONNECTOR

PM0415E	15		
PM0418E	18		
PM0422E	22		



## EQUAL ELBOW

PM0315E	15		
PM0318E	18		
PM0322E	22		



## EQUAL TEE

PM0215E	15		
PM0218E	18		
PM0222E	22		



## REDUCING TEE

PM3018AE	18		15
PM3022AE	22		15



## STEM ADAPTOR Converts push fit end to male thread

PM051513E	15	3/8"	
PM051514E	15	1/2"	
PM051814E	18	1/2"	
PM052214E	22	1/2"	
PM052216E	22	3/4"	



## STEM ELBOW Allows fitting to swivel in any direction

PM221515E	15		15
PM221818E	18		18
PM222222E	18		18



Part No.	Pipe OD	Thread BSP	Pipe #2 OD
----------	---------	------------	------------

## REDUCER

PM061512E	15		12
PM061815E	18		15
PM062215E	22		15
PM062218E	22		18



## AIRLINE DROP LEG TEE

PMTT22E	22		22
---------	----	--	----



## PLUG

PM0815E	15		
PM0818E	18		
PM0822E	22		



## BRASS WINGBACK ELBOW

PM15WB	15	1/2"	
PM22WB	22	3/4"	



## BRASS STRAIGHT ADAPTOR

MM011504N	15	1/2"	
MM052206N	22	3/4"	



## BRASS STEM ADAPTOR MALE

MM051504N	15	1/2"	
MM052206N	22	3/4"	



## BRASS STEM ADAPTOR FEMALE

MM501514N	15	1/2"	
MM502216N	22	3/4"	



## PORTING BLOCK

JGPG		5 x 1/2"	
------	--	----------	--



## COLLET COVERS For when pipes are concealed

PM1915E	15		
PM1918E	18		
PM1922E	22		



## PIPE MOUNTING CLIP

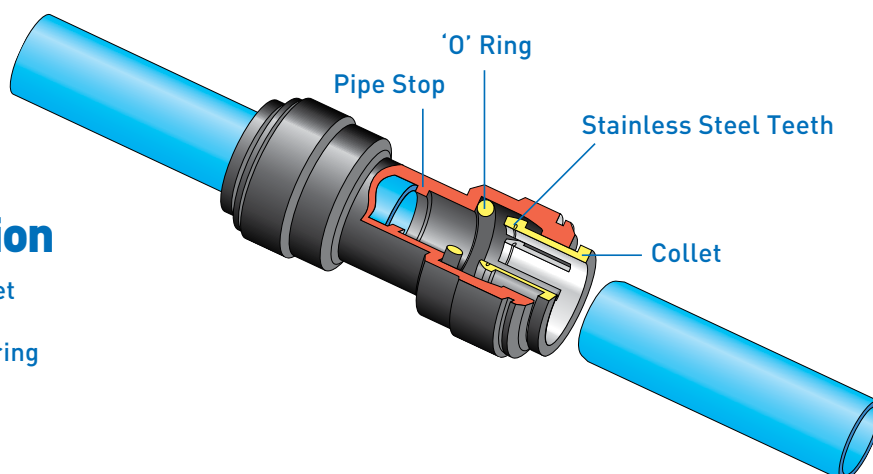
PC15E	15		
JGRK18	18		
PC22E	22		

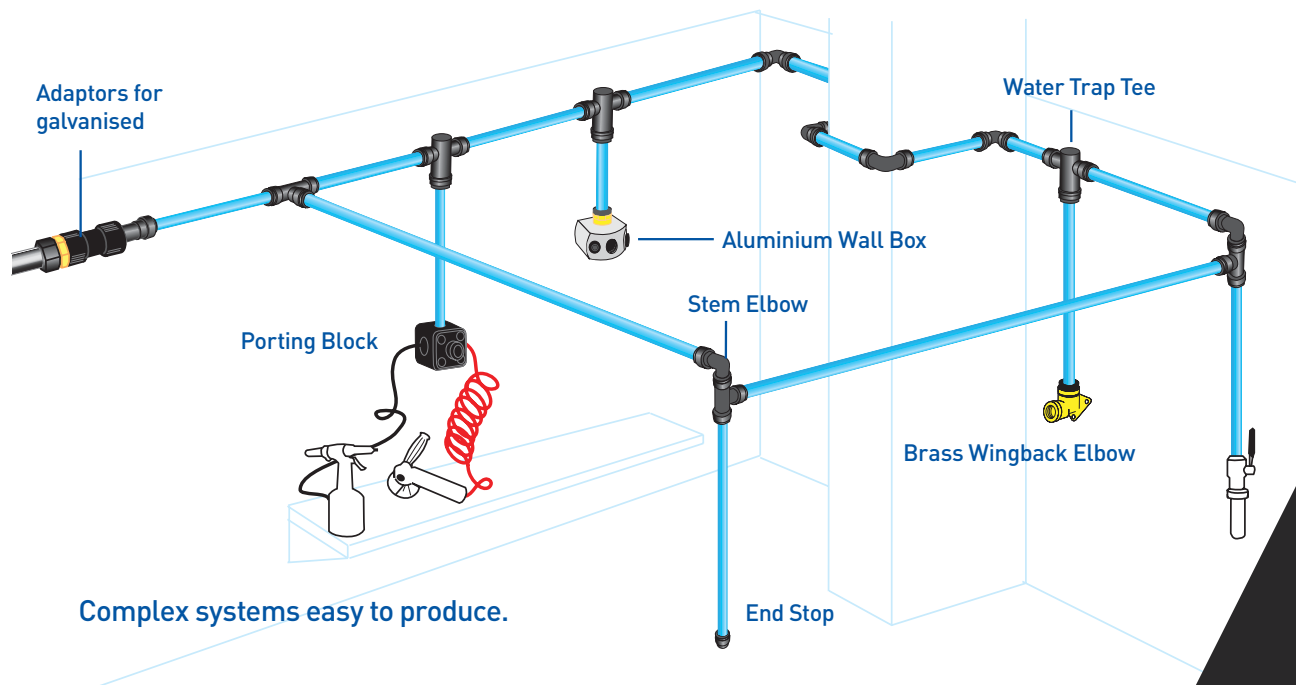


# SUPER SPEEDFIT

## Easy to make a connection

The John Guest Push-fit Fitting has a collet (gripper) with stainless steel teeth which hold the pipe firmly in position and an 'O' ring to provide a permanent leak proof seal.





# SUPER SPEEDFIT

Push-Fit  
Compressed  
Air System

- Designed for compressed air applications
- Safe, secure and leakproof
- Easy to install
- Easy to disconnect and reconfigure the system
- Fittings suitable for copper or aluminium pipe
- Many millions of fittings in use
- Collet cover makes fitting tamperproof
- Working Pressures 0-10 bar

## Warranty:

Whilst we give warranty against defects in manufacture or materials, it is the responsibility of the specifier to ensure that fittings and related products are suitable for their application. The installation must be carried out correctly in accordance with our recommendations, complying with recognised codes of practice and relevant national standards, and be properly maintained. Please refer to our terms and conditions of sale.

The company has a policy of continuous research and development and reserve the right to amend without notice the specification and design of all products illustrated in this catalogue. For further information on the John Guest Product Range and terms of conditions, please consult our Customer Services Department.

Doc #126

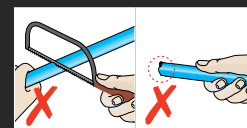
## THREE EASY STEPS

Fittings and pipe should be kept clean and undamaged before use.

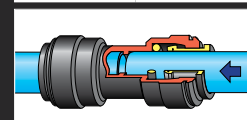
Cut the pipe square. We recommend the use of the JG Pipe Cutter.



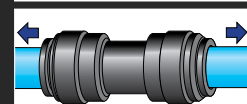
DO NOT use a hacksaw. To avoid damage to the 'O' ring remove burrs and sharp edges.



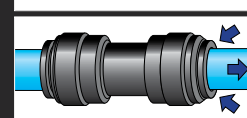
Push up to pipe stop.



Pull to check secure. Test the system before use.



To disconnect, ensure the system is depressurised. Push the collet towards the fitting and remove the pipe. The fitting can be reused.



**Air Energy**   
COMPRESSED AIR SYSTEMS • INDUSTRIAL PIPEWORK

**1300 99 55 26**  
**airenergy.com.au**  
**sales@maxair.com.au**